

DISCOVER WHAT  
HAPPENS ONLY AT GW

GW GW GW



# WHAT WE MAKE IS HISTORY

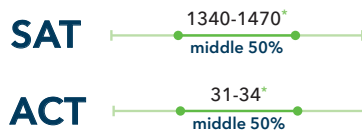


The George Washington University sits in the heart of the nation's capital, where the worlds of politics, science, business, engineering, media, and the arts converge. Our students have unparalleled opportunities to study and work alongside leaders in every discipline. Our vast network of internships, research, service, partners, and alumni make coming here life- and world-changing. Every day, our students experience moments that happen only at GW.

## ENROLLMENT STATS

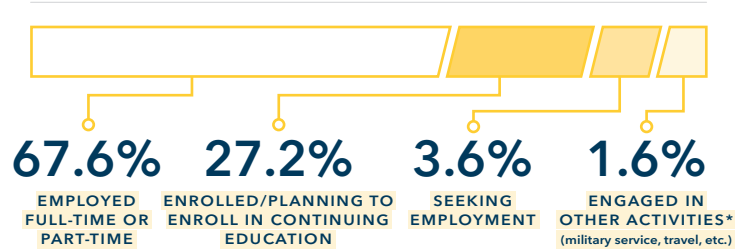


Although GW is a test-optional university, three-year average scores are shown below for test submitters.



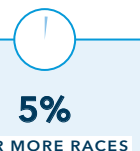
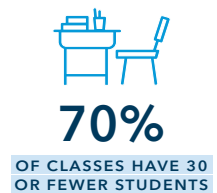
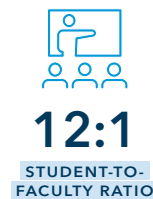
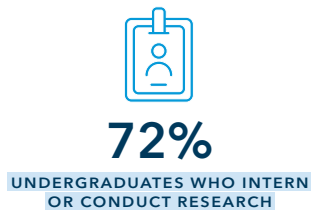
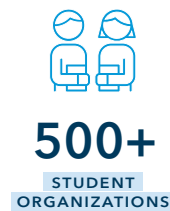
## OUTCOMES GRADUATING CLASS OF 2022

**96%** EMPLOYED, CONTINUING EDUCATION OR OTHER ENGAGEMENTS



Explore outcomes for your major at [go.gwu.edu/outcomes](https://go.gwu.edu/outcomes).

## UNIVERSITY FACTS







# WITH GREAT PROXIMITY COMES GREAT POSSIBILITY.

## D.C. IS HOME TO...



More than 430 federal agencies and subagencies and more non-governmental organizations, nonprofits, and think tanks per capita than any other U.S. city



**8**

**PROFESSIONAL SPORTS TEAMS**



**OVER 800** MILES OF OUTDOOR TRAILS



**19**

**FORTUNE 500 COMPANIES IN THE METRO REGION**



**OVER 7,400** ACRES OF OUTDOOR GREEN SPACES



**Dozens**

**OF THEATERS, CLUBS, AND CONCERT HALLS WITHIN A SHORT DISTANCE TO CAMPUS**



**OVER 70**

**MUSEUMS**

(including 19 free Smithsonian!)



**105,000**

**ALUMNI**







## TWO D.C. CAMPUSES

**GW maintains two fully integrated campuses in Washington, D.C. A free shuttle transports students regularly between our Foggy Bottom and Mount Vernon campuses, which are only 3 miles apart.**



Our **FOGGY BOTTOM CAMPUS** is 20+ city blocks in the heart of D.C. with residence halls and many academic buildings. Blocks from the White House and the National Mall, you'll find an array of academic, professional, and social opportunities that are unmatched elsewhere.



Our **MOUNT VERNON CAMPUS** is 25 acres in the historic Berkley neighborhood of northwest D.C. With residence halls, classroom space, a library, and athletic fields and facilities, this beautiful campus offers a quieter space for academic exploration.





# ANY MOMENT CAN BE MONUMENTAL

## ENTREPRENEURIAL SPIRIT

GW is on the top 25 list of universities in the U.S. that have graduated the highest number of billion-dollar start-ups. Since 2010, GW's New Venture Competition has awarded millions in both cash and in-kind prizes to entrepreneurial students working to solve world issues.

## LEARN FROM LEADERS

GW's location in the heart of the nation's capital provides students with the opportunity to learn directly from many of the world's top leaders, entrepreneurs and policymakers, such as chef, humanitarian and author José Andrés, HON '14.



## MEDAL-WORTHY MOMENTS

Our community of distinguished and accomplished alumni, including Elana Meyers Taylor, B.S. '06, M.T.A. '11, HON '18, the most decorated Black athlete in Winter Olympics history, is inspiring and embodies what it means to be a Revolutionary.

## SERVING OUR COMMUNITIES

Over two-thirds of GW students participate in campus and community service projects. In 2021, the University recorded 654,708 hours of service from more than 5,000 members across the GW community. Learn more at [serve.gwu.edu/service-hours](https://serve.gwu.edu/service-hours).

## GW FUN & SPIRIT

With more than 500 student organizations, 20 NCAA Division I athletic teams, numerous celebrated speakers and an impressive calendar of arts and cultural activities on campus and throughout the city, there is never a lack of things to do or get excited about at GW.

# GW UNDERGRADUATE MAJORS

## COLUMBIAN COLLEGE OF ARTS AND SCIENCES

Africana Studies	Environmental and Sustainability Studies	Political Science
American Studies	Environmental Studies	Political Science (Public Policy)
Anthropology	French Language and Literature	Psychological and Brain Sciences
Arabic Studies	Geography	Psychology
Archaeology	Geological Sciences	Religion
Astronomy and Astrophysics	German Language and Literature	Russian Language and Literature
Biological Anthropology	History	Sociology
Biology	Human Services and Social Justice	Spanish and Latin American Languages, Literature, and Cultures
Biophysics	Japanese Language and Literature	Speech, Language, and Hearing Sciences
Chemistry	Judaic Studies	Statistics
Chinese Language and Literature	Korean Language and Literature	Women's, Gender, and Sexuality Studies
Classical and Ancient Near Eastern Studies	Mathematics	
Cognitive Neuroscience	Neuroscience	
Cognitive Science of Language	Organizational Sciences	
Communication	Peace Studies	
Criminal Justice	Philosophy	
Data Science	Philosophy (Public Affairs)	
Economics	Physics	
English		
English and Creative Writing		

## CORCORAN SCHOOL OF THE ARTS AND DESIGN

Art History	Graphic Design*	Music
Dance	Interaction Design*	Photojournalism*
Fine Arts*	Interior Architecture	Theatre

\* A portfolio is required when applying to these Bachelor of Fine Arts majors.

## SCHOOL OF MEDIA AND PUBLIC AFFAIRS

Journalism and Mass Communication	Political Communication
-----------------------------------	-------------------------

## ELLIOTT SCHOOL OF INTERNATIONAL AFFAIRS

Asian Studies	Latin American and Hemispheric Studies	Middle East Studies
International Affairs		

## MILKEN INSTITUTE SCHOOL OF PUBLIC HEALTH

Exercise Science	Nutrition	Public Health
Health Data Science		

## SCHOOL OF ENGINEERING AND APPLIED SCIENCE

Applied Science and Technology	Civil Engineering	Electrical Engineering
Biomedical Engineering	Computer Engineering	Mechanical Engineering
	Computer Science	Systems Engineering

## SCHOOL OF BUSINESS

Accountancy	Entrepreneurship and Innovation	Information Systems
Business	Finance	International Business
Business Analytics		Marketing

## SPECIAL PROGRAMS

GW offers many special academic programs that require a separate application, including:

- Cisneros Scholars
- Politics & Values
- University Honors
- Civic House
- Seven-Year B.A./M.D.
- Women's Leadership
- Corcoran Scholars

[Learn more at go.gwu.edu/specialinterest.](https://go.gwu.edu/specialinterest)

## CONNECT WITH US

[f](#) [t](#) [@](#) **GWAdmissions**

[gwadm@gwu.edu](mailto:gwadm@gwu.edu)

202-994-6040

[go.gwu.edu/admissions](https://go.gwu.edu/admissions)